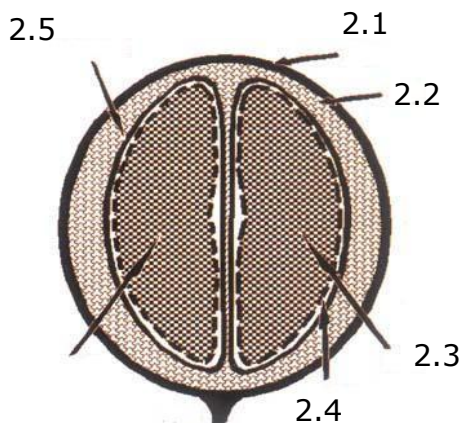


Essential Activity:										
Student Name:										20
Student Number:	D	H	M							

1. Discuss the main **differences** in the two beans mentioned above under the following headings:
 - 1.1 Production percentages delivered (2)
 - 1.2 Quality and flavour and aroma of the beans (2)
 - 1.3 Caffeine Content of the bean (2)
 - 1.4 Growth specifications of the tree (4)

2. Identify the parts of the following cross section of a coffee cherry. (5)
Write only the identified part next to the number (2.1.1 – 2.1.5) on your answer sheet.



3. List five (5) changes that a coffee bean goes through when it is roasted. (5)

Submission date	Monday, 29 March 2021
------------------------	------------------------------